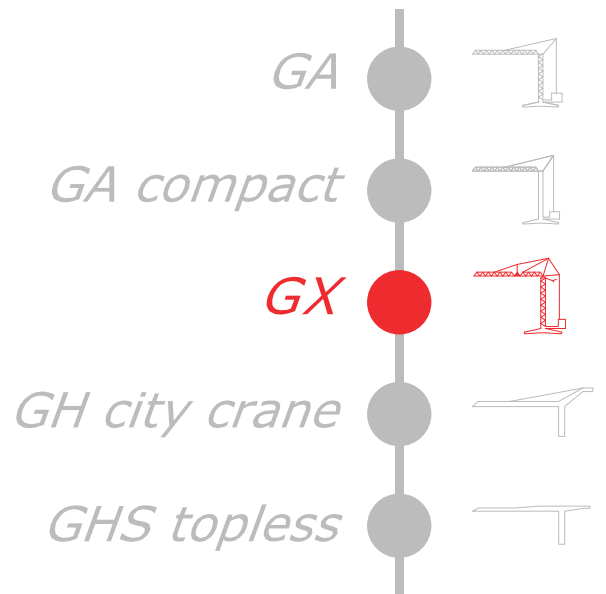


**GRU A TORRE**

# **GX 251**

---



---

*FB F.lli Butti s.r.l.*

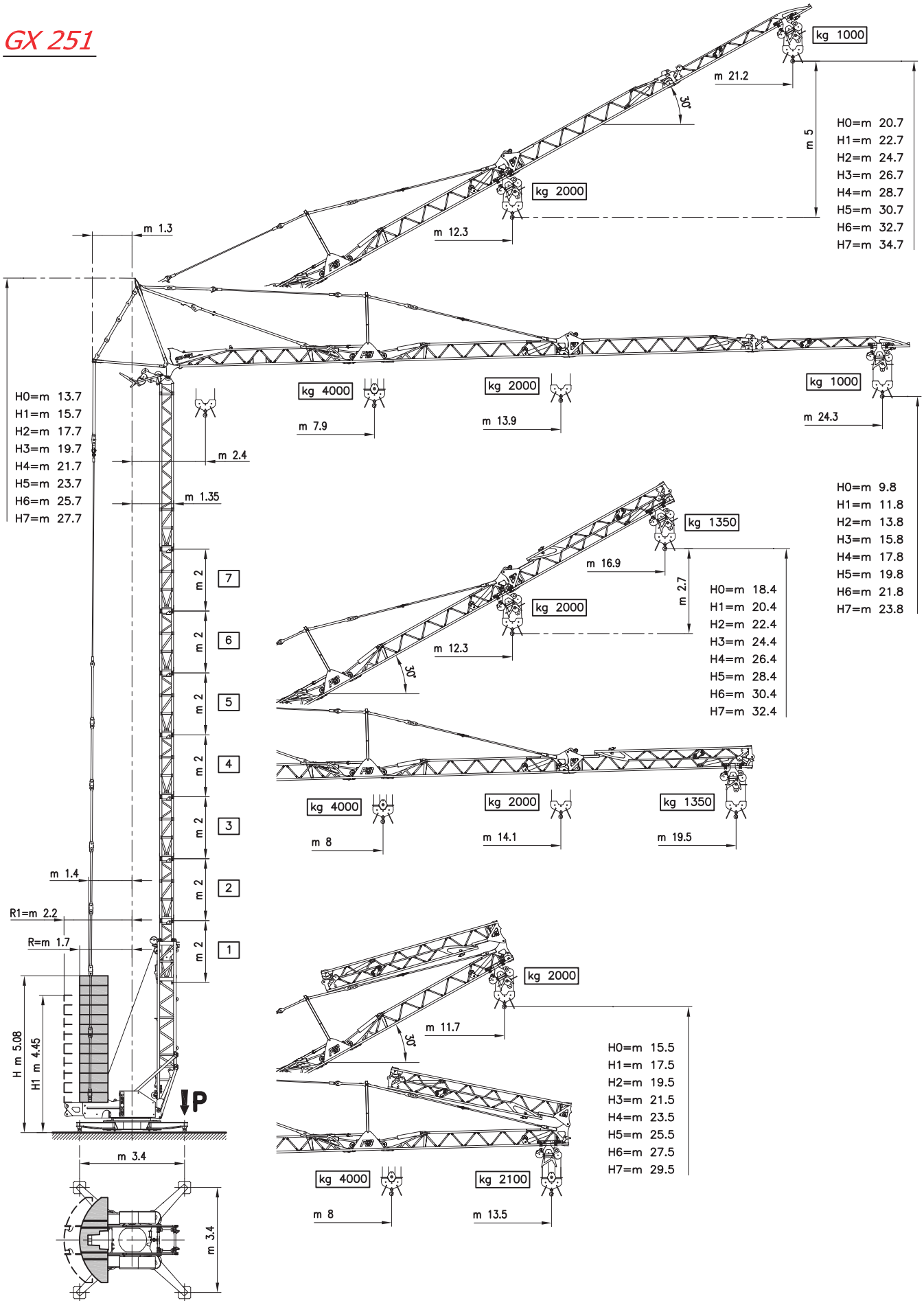
*Via XXV Aprile, 58*

*23868 Valmadrera (LC) - ITALIA*

*Tel. 0341.581108 - Fax 0341.200253*

*E-mail : fbgru@fbgru.it - <http://www.fbgru.it>*







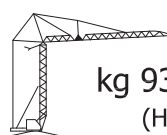
H0=m 13.7  
H1=m 15.7  
H2=m 17.7  
H3=m 19.7  
H4=m 21.7  
H5=m 23.7  
H6=m 25.7  
H7=m 27.7

H0=m 20.7  
H1=m 22.7  
H2=m 24.7  
H3=m 26.7  
H4=m 28.7  
H5=m 30.7  
H6=m 32.7  
H7=m 34.7

H0=m 9.8  
H1=m 11.8  
H2=m 13.8  
H3=m 15.8  
H4=m 17.8  
H5=m 19.8  
H6=m 21.8  
H7=m 23.8

H0=m 15.5  
H1=m 17.5  
H2=m 19.5  
H3=m 21.5  
H4=m 23.5  
H5=m 25.5  
H6=m 27.5  
H7=m 29.5

<b>P</b>	
<b>kg 21300</b>	<b>kg 16000</b>
<i>In servizio</i>	<i>Fuori servizio</i>
En servicio	Fuera de servicio
In service	Out of service
In betrieb	Außer betrieb
En service	Hors service

	
 R=1.7 m	kg 23400
R1=2.2 m	kg 19800
	<b>kg 9350+1620</b> (Hmax=H7)

# MECCANISMI

MECANISMOS — MECHANISMS  
ANTRIEBE — MÉCANISMES

<b>MOVIMENTO</b> MOVIMIENTO MOVEMENT BEWEGUNG MOUVEMENT	<b>ALIMENTAZIONE</b> ALIMENTACION OPERATING VOLTAGE BETRIEBSSPANNUNG TENSION DE SERVICE	<b>PRESTAZIONI</b> FUNCIONAMIENTOS PERFORMANCES LEISTUNGEN EXÉCUTIONS	
---	---	---	--

				1 <sup>a</sup> m/1' - kg	2 <sup>a</sup> m/1' - kg	3 <sup>a</sup> m/1' - kg		
<b>SOLLEVAMENTO</b> ELEVACION — HOISTING HEBEN — LEVAGE  <b>INVERTER</b>	230 V 50 Hz	3 kW		5 ↓↑	15 ↓↑	19 ↓↑	kW 9.2	
				2000	2000	1000		
				3 ↓↑	8 ↓↑	10 ↓↑		
		6 kW		4000	4000	2000		
				5 ↓↑	20 ↓↑	24 ↓↑		
				2000	2000	1000		
	400 V 50 Hz	3 kW		5 ↓↑	26 ↑   27 ↓	40 ↑   42 ↓		kW 9.2
				2000	2000	1000		
				3 ↓↑	13 ↑   14 ↓	20 ↑   21 ↓		
		6 kW		4000	4000	2000		
				5 ↓↑	26 ↑   27 ↓	40 ↑   42 ↓		
				2000	2000	1000		

		1 <sup>a</sup> m/1'	2 <sup>a</sup> m/1'	3 <sup>a</sup> m/1'	
<b>CARRILLO</b> CARRILLO — JIB TROLLEY LAUFKATZE — DISTRIBUTION  <b>INVERTER</b>	230V - 400 V 50 Hz	10	25	40	kW 3

		1 <sup>a</sup> g/1'	2 <sup>a</sup> g/1'	3 <sup>a</sup> g/1'	
<b>ROTAZIONE</b> ROTACION — SLEWING DREHEN — ORIENTATION  <b>INVERTER</b>	230V - 400 V 50 Hz	0 → 0.18	0.18 → 0.45	0.45 → 0.9	kW 2.2



Conforme alle direttive  
CEE sul livello acustico  
2000/14/CE

Conforme con las directivas  
CEE sobre el nivel acustico

In compliance with the EEC  
instructions on noise level

Gemass EWG-Richtlinien für  
den Schall-Leistungspegel

Conforme aux directives CEE  
sur le niveau acoustique

## CURVE DI CARICO

CURVAS DE CARGAS — LOAD DIAGRAMS  
LASTKURVEN — COURBES DE CHARGES

 (0 - 2000 kg)	m	7.9	9	10	11	12	13.9	16	18	19	21	22	23	24.3
	(2001 - 4000 kg)	kg	4000	3393	2980	2651	2382	2000	1689	1460	1365	1203	1134	1071

<b>BRACCIO IMPENNATO</b> FLECHA IZADA LUFFING JIB AUSLEGER IN STEILSTELLUNG FLÈCHE RELEVÉE	 <b>Carrellino distributore</b> Carrellino distribuidor — Traversing trolley Verfahrbare laufkatze — Chariot distributeur	kg 1000/2000
--	--	--------------

## POTENZA RICHIESTA

POTENCIA-ELECTRICA NECESARIA — NECESSARY ELECTRIC POWER  
KRAFTBEDARF — PUISSANCE ELECTRIQUE NECESSAIRE

 230 V - 400 V 50 Hz	<b>SOLLEVAMENTO</b> ELEVACION — HOISTING — HEBEN — LEVAGE		kg 2000		kg 4000
	<b>3 kw</b> 230 V - 50 Hz	<b>6 kw</b> 230 V - 50 Hz	<b>12 kw</b> 400 V - 50 Hz		

GX 251

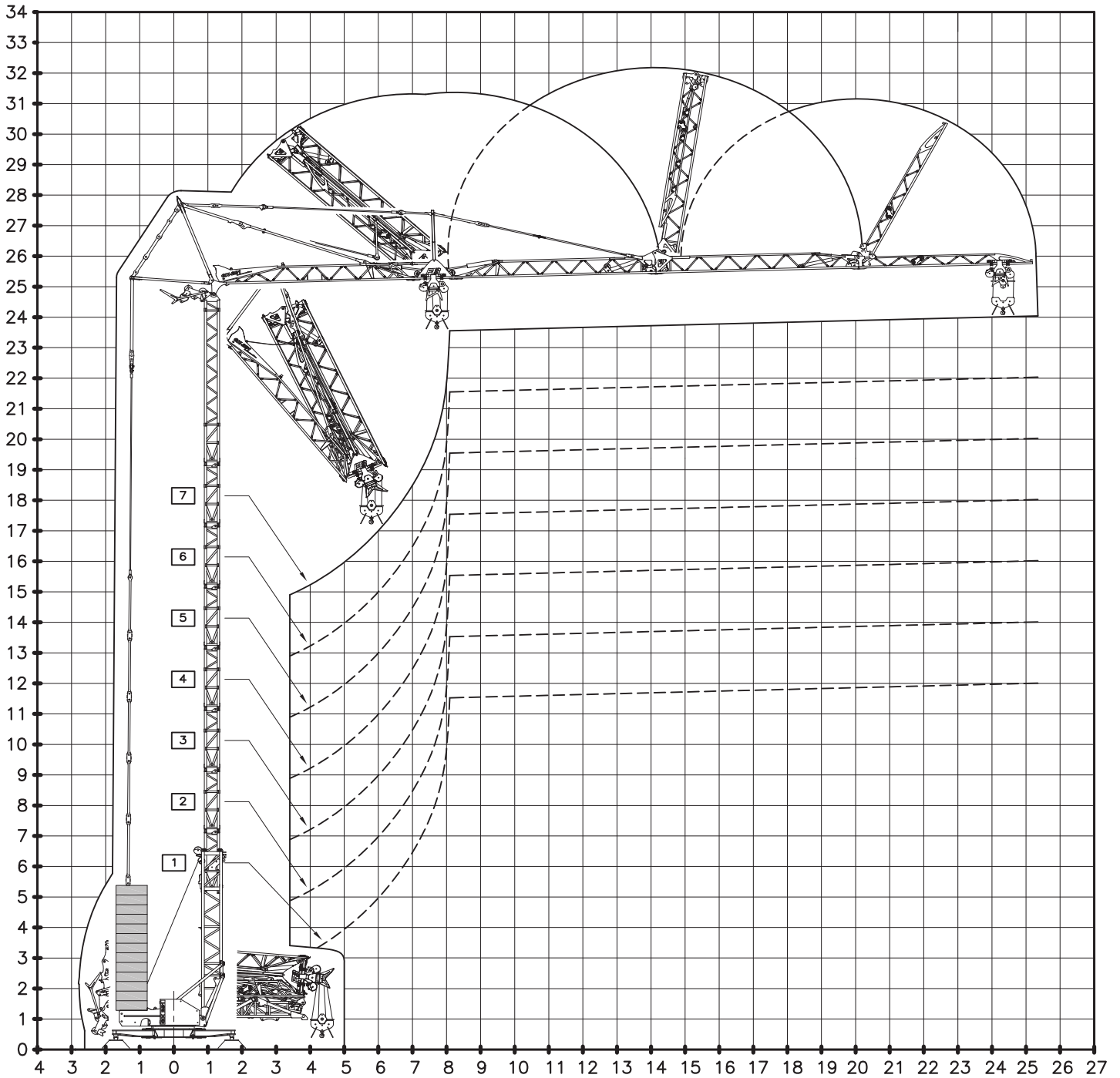
Con riserva di modifiche  
documento commerciale  
non vincolante

Derecho de modificaciones reservadas  
documento comercial no contractual

Subject to change without notice  
commercial document not legally  
binding

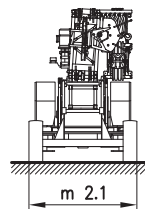
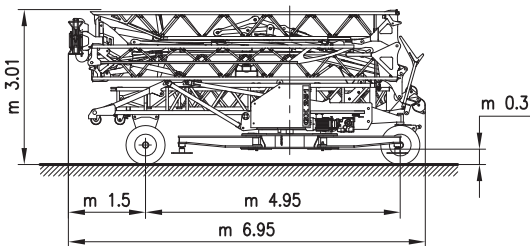
Anderungen vorbehalten  
Unverblindliches  
Vertriebsdokument

Modifications réservées  
document commercial  
non contractuel

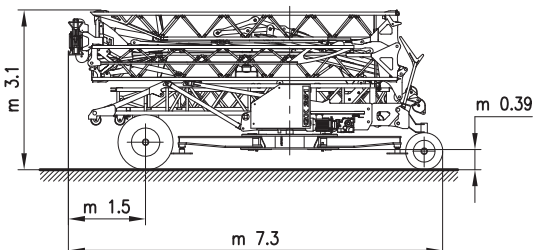


**TRASPORTO** TRANSPORTE — TRANSPORT  
TRANSPORT — TRANSPORT

**5**  
km/h



**25**  
km/h



**Baumgartner Kran GmbH**

Bahnhofstrasse 72  
5322 Koblenz

**Tel. +41 (0)79 662 21 02**

www.baumgartnerkran.ch  
info@baumgartnerkran.ch

